

FRESHER PROGRAM

Fresher programme includes the usage of anatomage table and subsequent assessment through interactive activities. The students are actively involved in project works and designing the following interactive games

Flash cards: Structures and systems of human body are designed by the students in one card and the related theory on other card

Puzzles: Cross word puzzle games are created for specific topics and the puzzles are filled by solving clues which lead to answers

Clay models: clay models of various anatomic structures and physiological processes

Scrabble: Learning new medical terminology using scrabble games

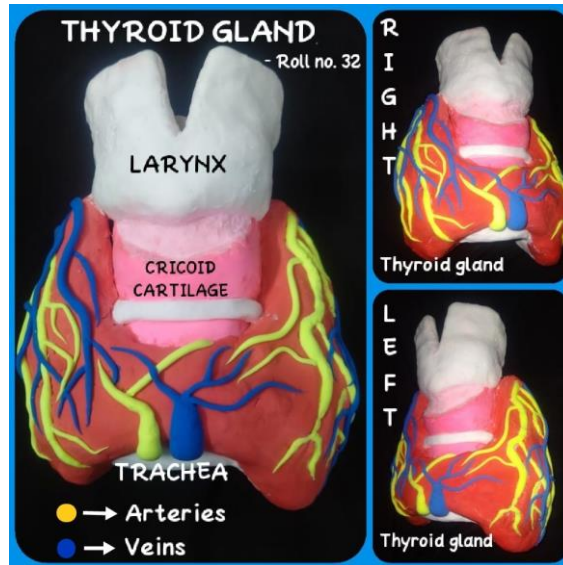
Misconception checks: A false fact about a topic that has been taught is presented to students. Each student explain their agreement or disagreement with the false fact and their reasoning

Dental and medical memes: Funny memes related to dental and medical subjects are designed by students

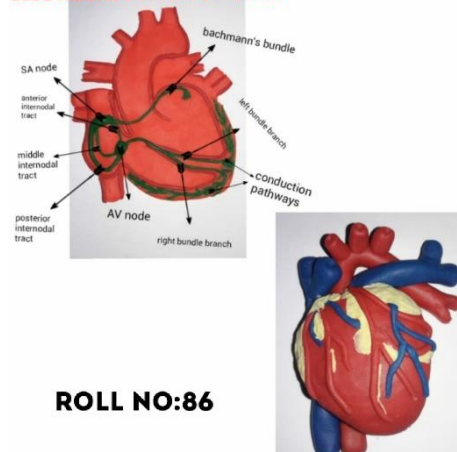
Visual mneumonics: They are specially designed pictures to recall a series of items on a list

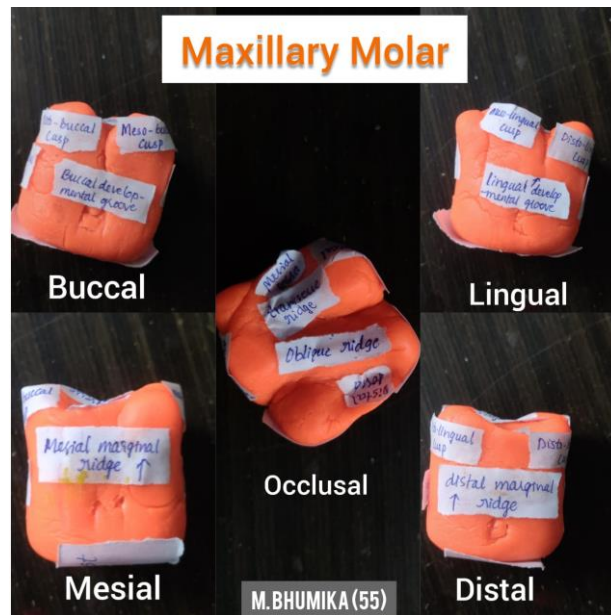
Buzz sessions: Formation of small discussion groups and assessment is done through questtionnare.

CLAY MODELS



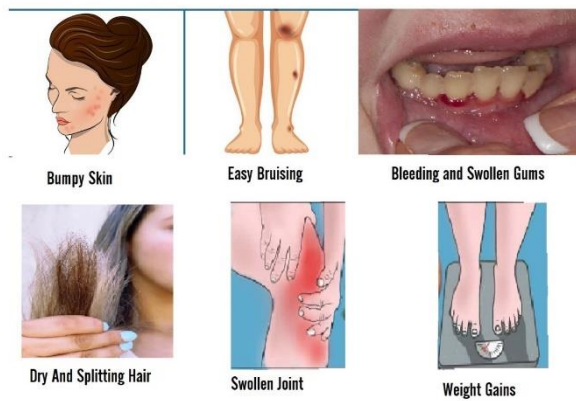
ELECTRICAL SYSTEM OF HEART





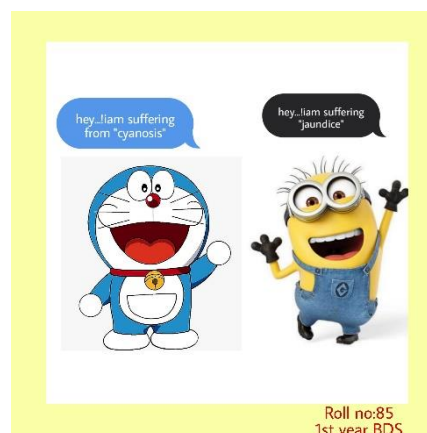
FLASH CARDS

SYMPTOMS OF VITAMIN "C" DEFICIENCY



Roll No : 74

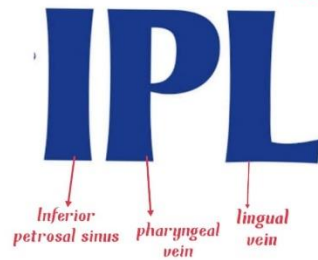
MEMES



VISUAL MNEUMONICS

Tributaries of Internal Jugular vein

-Roll no 40



superior
thyroid vein



common facial
vein



middle thyroid
vein

PUZZLES

WORD SEARCH



V	C	A	S	L	A	T	N	E	D	M	N	L	U
V	U	A	T	I	G	V	O	E	O	R	E	E	U
C	A	L	C	N	N	F	G	N	R	A	C	M	N
I	L	L	I	I	S	N	M	M	A	U	U	A	A
N	A	I	F	N	T	E	N	L	G	T	G	A	E
G	M	P	I	G	A	I	N	U	N	R	N	D	C
U	I	A	S	M	A	U	I	E	O	N	O	E	L
L	N	P	S	U	S	A	M	O	U	C	P	C	M
U	A	N	U	C	A	E	V	O	A	R	G	S	T
M	T	C	R	O	C	E	E	L	L	P	S	G	I
O	O	R	E	S	I	E	P	A	U	A	L	P	R
I	A	O	G	A	E	L	O	I	S	A	A	A	L
O	N	W	S	L	T	O	N	G	U	E	O	L	G
G	A	N	N	A	G	I	N	G	I	V	A	A	C

Hints:

GROOVE
LININGMUCOSA
DENTALSAC
TONGUE
CROWN
FISSURE
GINGIVA
CEMENTUM
PLACODE
CINGULUM
LAMINA
PAPILLA



Roll no : 22
1st year BDS

SEMINARS



PHOTO-2021-04-14-13-26-07.jpg



PHOTO-2021-04-14-13-43-39.jpg



PHOTO-2021-04-14-14-09-20.jpg



PHOTO-2021-04-14-13-26-39.jpg



PHOTO-2021-04-14-13-43-41.jpg



PHOTO-2021-04-14-16-26-01.jpg



PHOTO-2021-04-14-13-43-28.jpg



PHOTO-2021-04-14-13-43-42.jpg

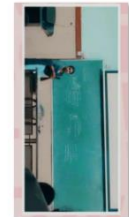


PHOTO-2021-04-14-16-26-15.jpg

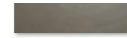


PHOTO-2021-04-14-13-43-36.jpg



PHOTO-2021-04-14-14-03-40.jpg



VIDEO-2021-04-14-13-26-15.mp4

SIMULATION

